

PFAFF

fine sewing



Innovative - Flexible - Powerful



Foto: W. Schilling / Germany



Foto: W. Schilling / Germany

Innovations for the home upholstery
and automotive interior industry



*“Synonymous for performance
and quality”*



**PFAFF 1525-6/14-900/81-910/04-911/35
-918/29 CLMN 8**

Special triple-feed high-speed seamer with thread trimmer, automatic presser foot, backtacking mechanism, top feed responsive speed control, bobbin rest thread monitor, 2 selectable stitch length with a sewing speed up to 4,000 s.p.m.

(1525: Single-needle version / 1526: Double-needle version)



**PFAFF 1525-S-6/14-900/81-910/04
-911/35 CLMN 8**

Special triple-feed high-speed seamer with thread trimmer, automatic presser foot, backtacking mechanism

(1525: Single-needle version)



“A price hit – reduced to max”



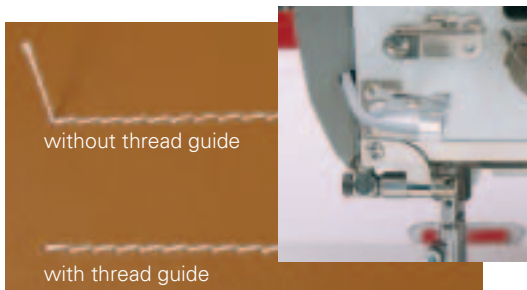
Premium version of the
market performer PFAFF 1525



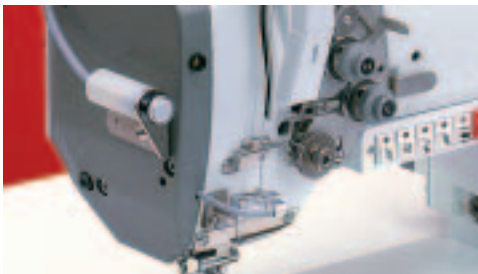
PFAFF 1525-G-SSD-6/14-900/86-901/03-909/12-910/04- 911/35-918/29 D LMN8

Premium version of special triple-feed high-speed seamer. „D-Version“ for sewing medium to heavy materials - preferably with threads up to 10/3 synthetic. The machine is equipped with many new features and it realized excellent sewing results with a sewing speed up to 2,700 s.p.m.

Superb features of the PFAFF 1525 premium version:



The new controlled thread guide ensures a neat seam start on the top side of the workpiece



„On-Board“ quality assurance system SSD (Skip **S**titch **D**etection)



70% added capacity with large vertical “Jumbo hook”

New

PFAFF SSD Skip Stitch Detection

The new skip stitch sensor "SSD" controls the seam for sewing errors during the work process

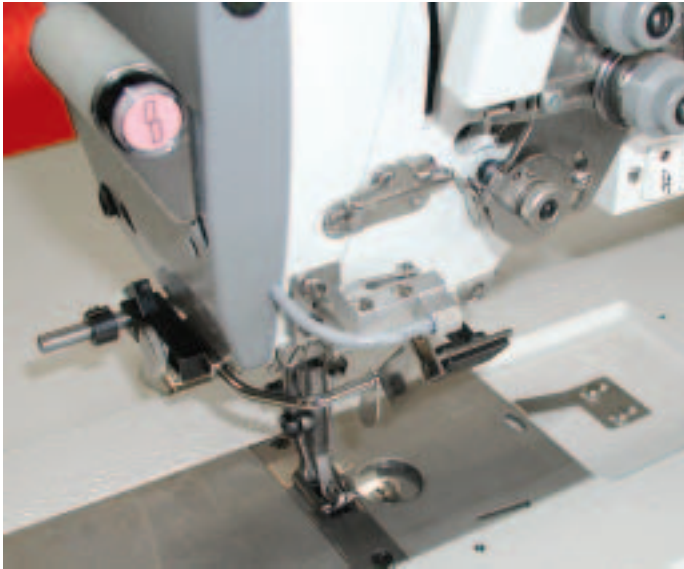


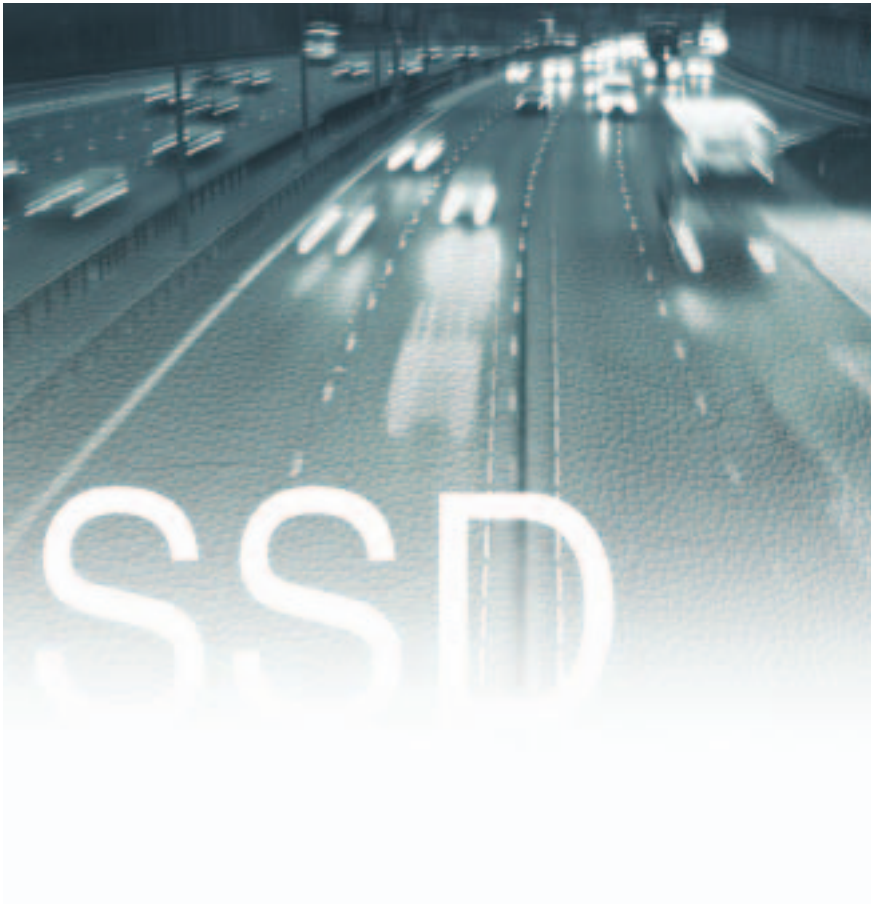
Photo: Recaro GmbH & Co. KG / Germany

SSD stands for "skip stitch detection" and is a quality assurance system, which controls each stitch for possible sewing errors during the work process. If a stitch is skipped, the machine stops automatically, the necessary re-machining work is displayed and the error corrected. This intelligent skip stitch detection function guarantees maximum process reliability – expensive and time-consuming repair work is avoided.

In particular in companies, where the value of the leather processed daily is often higher than the value of the entire machine, the use of the "SSD" is an excellent investment in quality and reliability.

- The missed stitch detection system guarantees better quality and seam security.
- The onboard QC-System eliminates expensive quality and seam checks.
- Production costs are reduced because expensive reworking is unnecessary - no claims
- The PFAFF innovation SSD with a payback on the fast track

SSD: Tomorrows standard – Today !



The function of SSD:



Closing the seam



In case of a skipped stitch
-> Machine stops automatically
-> Signal on
-> Start sewing is blocked



RESET of signal



Resume sewing !



„Accurate fullness on the dot!“

PFAFF 3811-15/65

Integrated workstation with tape feeding device from above and new touch-screen control panel for pre-gathering and applying fullness

- flexible adaption to many types of material
- exact gathered sections
- even gathering effects

Application example: A seam segment has an ACTUAL length of 20 cm and needs to be gathered to a REQUIRED length of 12 cm.



Subcl. -16/65

additionally with side cutter

„Precise and smooth gathering provide the foundation for an excellent finish and appearance of upholstery“



Photo: W. Schilling / Germany



Photo: Recaro GmbH & Co. KG / Germany

*“The global player –
probably the best special stitcher in the world”*

PFAFF 1245-6/01 CLPMN 8

All-purpose and robust flatbed sewing machine with uni-son feed

Areas of applicaton: Sewing of medium-heavy materials, e.g. furniture and car upholstery, leather garments, leather goods, etc.

--> up to max. 2,800 s.p.m.

--> up to max. 8 mm stitch length

(1245: Single-needle version /1246: Double-needle version





PFAFF 1295-6/01-911/97 CLPMN 11

Single-needle special lockstitch post-bed machine with thread trimmer, automatic presser foot, back-tacking mechanism

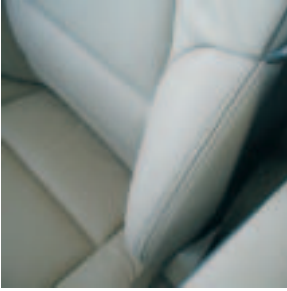
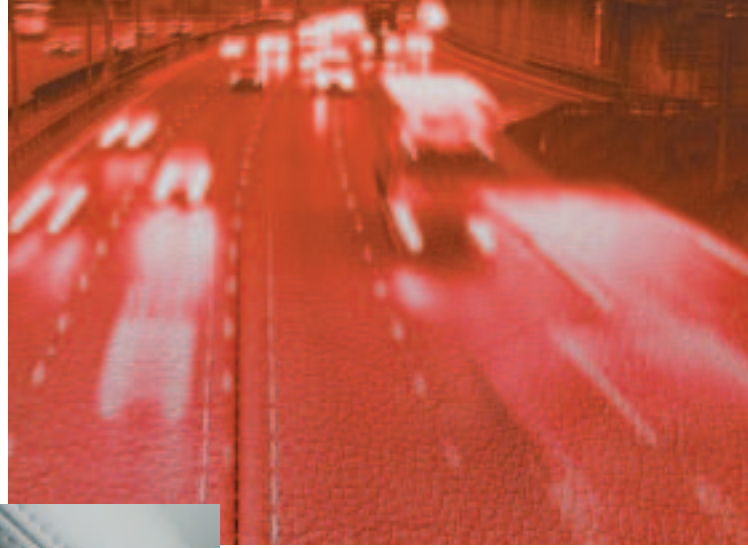
Areas of application:

Single-needle fancy- and top-stitching operations especially on shaped parts. Trouble-free stitching over cross sections. No stitch length variation, due to the alternating top feed with 7mm stroke

--> max. stitch length: 11 mm (coarse stitching)

--> thread size up to 15/3-ply, synth.





„Stub seams for the car seat and the sofa“

PFAFF 1296-63/15-911/97 CL x12,0 PMN 11

Double-needle special lockstitch post-bed machine with thread trimmer, automatic presser foot, backtacking mechanism and center guide in front

Areas of application:

Fancy- and top-stitching operations, also on one-sided bulky cross-seams; compensating presser, pneumatically operated, engageable center seam guide and tape guide from bellow

--> max. stitch length: 11 mm (rustic stitching)

--> thread size up to 10/3-ply, synth.





*„Extreme seam accuracy
on 500 x 300 mm“*

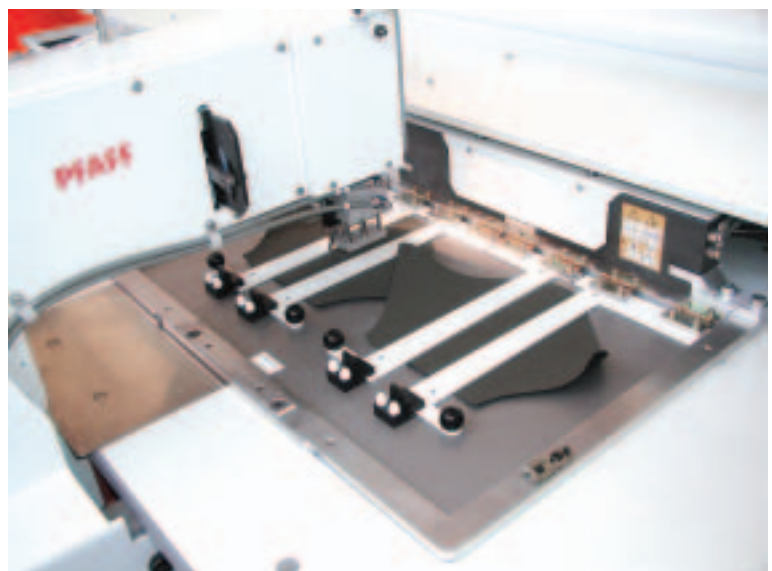
PFAFF 3587-2/01

Large area automatic sewing unit with a sewing area of 500 x 300 mm

- High accuracy of the top-stitched seams due to the patented material feed system
- Seam programming and seam program correction on the control panel directly at the machine
- Work clamp identification system or sewing program identification system (optional) ensures that the right sewing program is always activated automatically
- The automatic clamp change mechanism increases output by up to 20%

Areas of applications

Airbags, belts, car seats, car interior linings





PFAFF 3371-1/11 (C-Version)

Electronic bartacker for a high productivity due to short cycle times and sewing speeds up to 2,700 s.p.m. (with 40 standard bartack types)
New: Data transfer with SD-card

Areas of applications:

- Bartacks for labels and tags
- Ornamental and fastening tacks in the upholstery industry



PFAFF 5716-70A-5x5

Overlock- and safety-stitch sewing machine
(Number of needles: 2 / Number of threads: 5)

Area of application:

Overedging/Overlocking operations



*“PFAFF Docu-seam system -
because life may depend on a single thread”*

PFAFF 3715 Docu-seam system

The quality assurance system for car seat manufacture with integrated airbag, and the production of other safety-relevant seams.



With the docu-seam system PFAFF offers its customers a quality assurance system with many decisive advantages:

- High, consistent and reproducible seam quality
- Reduction of safety inspections
- 100% online monitoring and documentation of the nominal rupture seam (stitch by stitch)
- Facility for retracing sewn parts with their corresponding process data
- Process safety due to the password functions, safety levels
- Data comparison for the components involved in the sewing process by means of scanner
- Documentation/saving of the sewing process data
- Quick detection and analysis of error sources in the sewing process
- Electronic setting and controlling of thread tension, no manual adjustment
- Label editor

*The new dimension in
tape welding*

*„Programmable
100% proof“*



PFAFF 8330

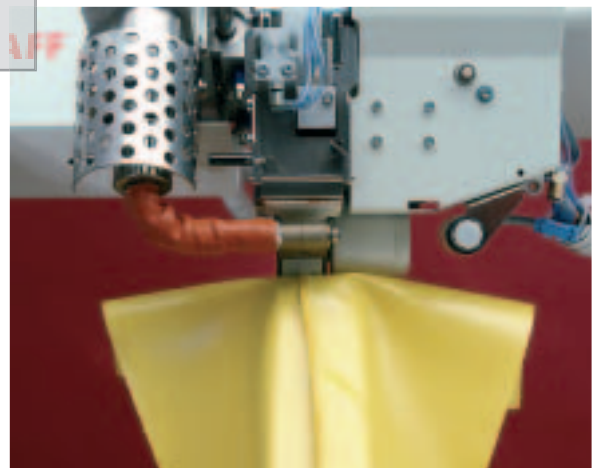
Programmable hot air sealing machine for the continuous sealing of seams (sewn seams are sealed with a tape)

Area of application:

Welding of the sewn seam before injecting foam into seats, head-rests, door panels etc..
The sealing prevents foam from flowing out.

Advantage:

- 100% parameter control
- Reproducibility
- Easy data transfer



Notes:

[Redacted]

[Redacted]

[Redacted]

[Redacted]

[Redacted]

[Redacted]

[Redacted]

[Redacted]

[Redacted]

[Redacted]

[Redacted]

[Redacted]

[Redacted]

Notes:

[Redacted]

[Redacted]

[Redacted]

[Redacted]

[Redacted]

[Redacted]

[Redacted]

[Redacted]

[Redacted]

[Redacted]

[Redacted]

[Redacted]

[Redacted]



PFAFF

fine sewing

Hotlines:

Technical service: +49-175/2243-101

Application consultancy: +49-175/2243-102

Spare-parts hotline: +49-175/2243-103

PFAFF Industrie Maschinen AG

- Postfach 3020
67653 Kaiserslautern
- Königstr. 154
67655 Kaiserslautern

Telephon: +49-631/200-0

Telefax: +49-631/17202

Internet: www.pfaff-industrial.com